

## Activities

The centre performs various activities by integrating different forms of media in teaching-learning process undertaken by the university. In the age of Information technology, learners look for more innovative ways to learn rather than relying on the conventional modes of education. This centre produces various academic programmes in audio as well as audio-visual format for the learner as well as for general audience for better understanding and engagement in academic matters.

Some of the activities of the centre is listed below

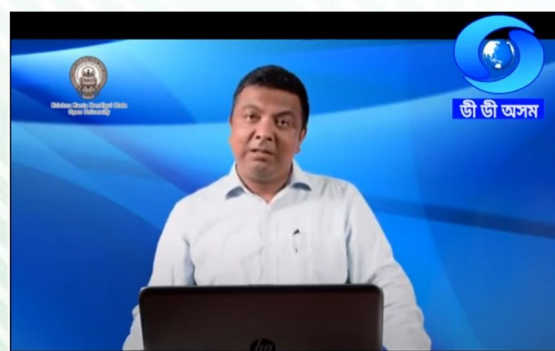
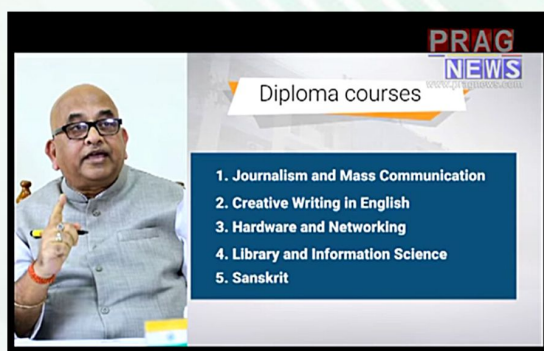
### Ekalavya:

This was a popular educational audio programme that broadcast since 2010 till the year 2020. The programme was meant for the learners as well as for common people of the state. The idea behind this programme was to explore the noted personalities of our society and to disseminate and influence people with their personalities. Moreover idea is to disseminate information about some socially relevant and current topic to the masses. Starting from **2010 to 2020**, socially relevant issues with noted personalities were discussed in this programme.



### Academic Programmes through TV

The reach of Television as a mass medium is quite impressive, gaining access among youth and old alike. To harness the efficacy of the medium of Television, the centre had started a half an hour live Educational Programme titled 'Simar Poridhi Bhangi', through the well-known television channel 'Prag News' from 3rd June, 2018 for a duration of one year.



To reach out to the unreached learners and community of stakeholders, from December 2019 interactive academic programme are broadcast via Doordarshan Kendra, Asom Channel. The Programmes were contributed by in-house faculties of the Universities designed following the SLM of the relevant courses. The primary objective of the programme is to cater quality academic resources to the people of the region.

## Activities

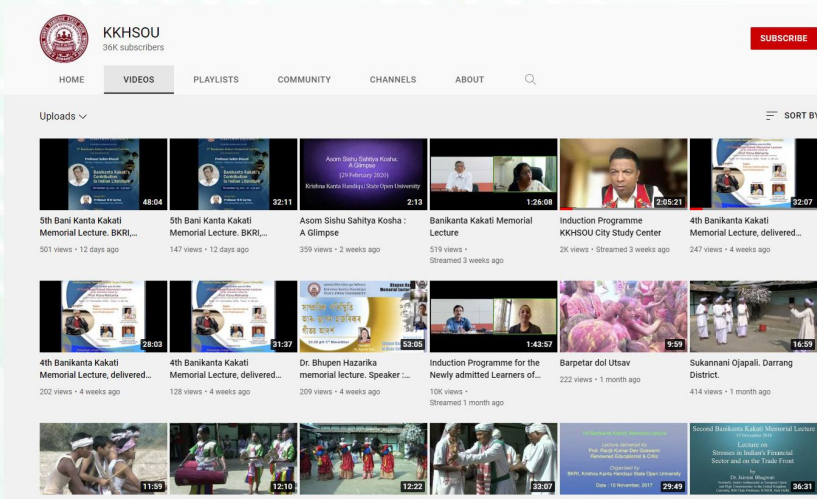
### Open Phone-in Programme:

Open Phone-in session aired through AIR, Guwahati was envisioned as a direct platform to establish communication with the general public from **February, 2008 to 2020**. This programme facilitated open and relevant interaction between the learners and the higher officials of the University.



### Audio Visual Lectures for upload in YouTube

The EMPC regularly develops videos contributed by the faculties of the University in relation with the SLM of the curriculum. The contents are designed in such a way that they become interactive with the use of graphics, slides to aid in comprehension. The Videos are developed in chronological order unitwise in each course and uploaded accordingly in order to ease Navigation. The videos are intended to offer scope for two way communication between the contributors and the learners paving the way for interaction through virtual and blended mode.



The video lectures can be accessed by logging into the Official YouTube channel of the University by navigating into the link <https://www.youtube.com/user/kkhsou/videos> over the internet through different devices.

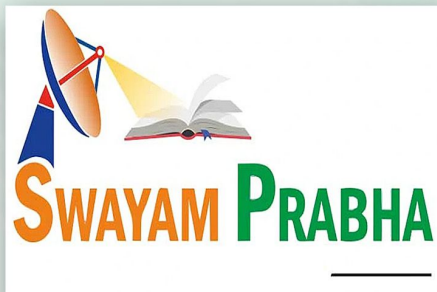
### Audio SLM Production

Visually Impaired learners are provided Self Learning Materials (SLMs) in the Audio CD format. Special care is taken to record audio in coherence with the Self Learning Materials (SLMs) of the particular academic programme as per the request of the Visually Impaired learners.

## Extended Activities

### Broadcast through SWAYAM PRABHA DTH Channel 20

Audio Visual lectures are being broadcast through SWAYAM PRABHA DTH Channel 20 since April 2021 for the benefit of the learners. The videos are available through **eGyankosh portal**.



### Jnan Taranga

EMPC offers its voluntary support towards University's Community Radio Jnan Taranga as an extended service since its inception. The university decided to utilize radio to communicate with the disadvantaged sections with the belief that education and community users are not mutually exclusive. Therefore, the content of the programmes deals with both educational as well as community-based issues. At present, Jnan Taranga operates at a frequency of 90 MHz at the Khanapara Campus of the University.



### Consultancy Services

EMPC offer consultancy services to Govt. and non Govt. organizations. Some of collaborative organizations are NIOS & UNICEF

The University CR acts as a nodal agency for implementing Community Radio Awareness Programme in the region aiming to provide necessary consultation and assistance to the interested institutions or voluntary organizations



## Outdoor Activities

### Preservation of ethnic Folk and Traditional Rituals

As an extension of social responsibility, the Centre has taken the initiative and produced the following documentaries :

- Barpeta Doul Utsav
- Darrongor Kola Kristi
- Bareshoria Bhaona ( Jamuguri )
- Majulir Raas Utsoy
- Assam Tourism
- Child labour
- Chandubi Mela
- Judima Utsoy of Dima Hasau
- Farakanti Dhormiyo Utsoy
- Kamakhyar Deodhoni
- Tea world: An initiative of KKHSOU



### Allied Supportive Services

- Admission advertisement, both print and non print format.
- University promotional video.
- AV Coverage of all important University events for archiving and display purpose (both online and offline).
- Multidisciplinary graphical and digital image support.

